

The **Perfect** Partner
for Your Next **Project...**



TECHNOLOGY

QUALITY

SMOOTH

POWER SAVING

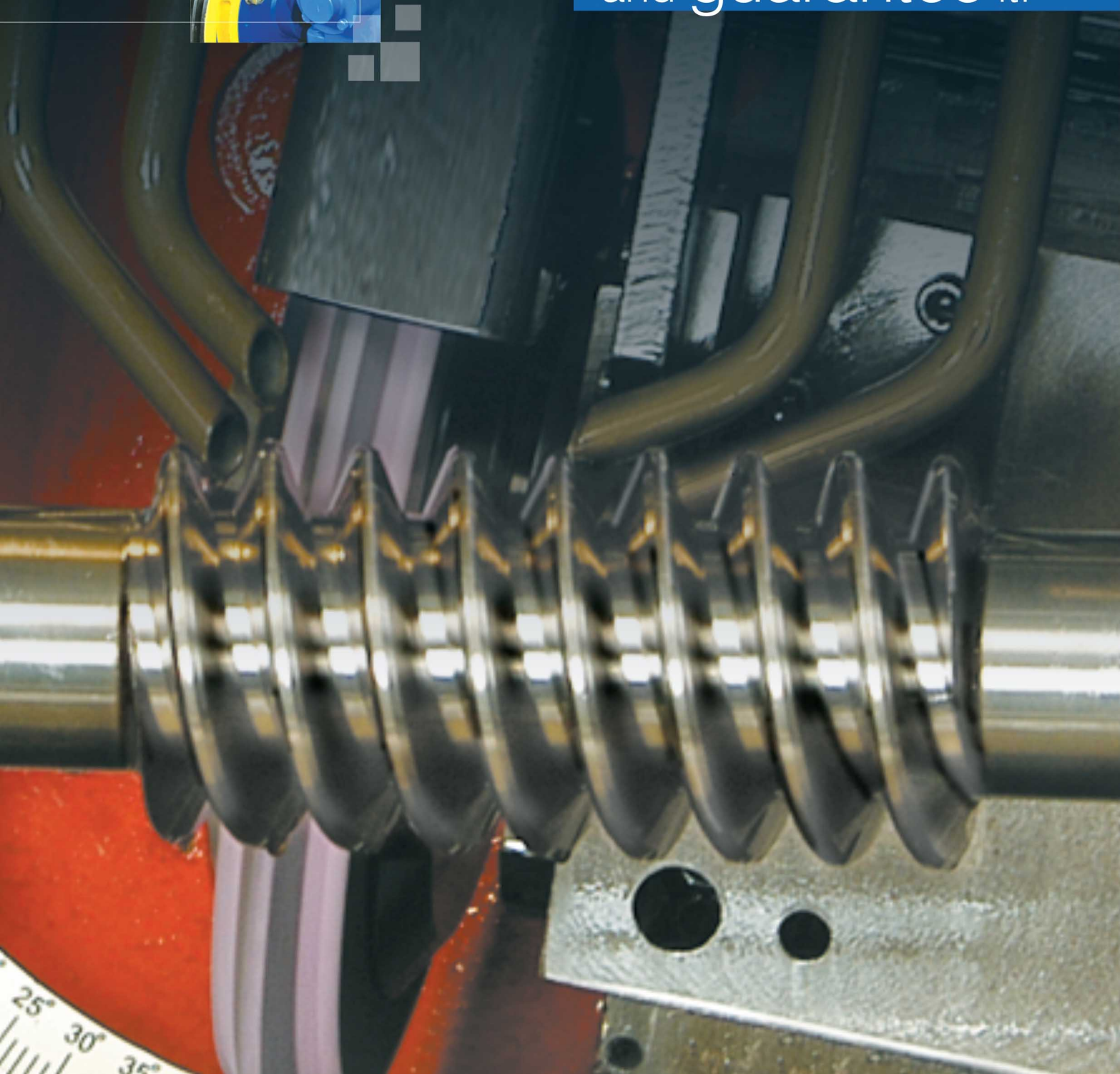
Mfg. of : Lift Duty Reduction Gear Box, Electric Motor & Other Lift Parts



LIFT-TEC
ENGINEERS



We design & engineer it,
manufacture & finish it
and guarantee it.





LIFT-TEC
ENGINEERS

www.lifttecengineers.com

Mfg. of : Lift Duty Reduction Gear Box, Electric Motor & Other Lift Parts



Company Profile

Company Profile

Lift-Tec Engineering was envisaged, promoted and incorporated by Mr. Nilesh Patel in Ahmedabad in the year 2001-2002. The company was well planned and established to manufacture prime quality Elevator Traction Machine.

An entrepreneurship which is a committed organization with a sincere endeavour, with a foresight of vision and earnest passion to rise and serve, excel and grow, perform and prove. The company is determined to achieve its rightful place in the global market. It believes, freedom inspires ideas and innovative skills nurtures excellence. The company incorporates the latest global innovations.

Driven by the passion to create world-class entity for itself, the company has an environment that encourages the best potential management which incorporates the best technology and team-work which stimulates all round creativity, expansion and further improvements. The company and the qualified engineers and staff remain alert to the global applications, and market feed-backs.

All part products have been tested for strength and durability meeting the most stringent international quality and specification standards. The company has an efficient manufacturing facility with in-house testing apparatus and systems for quality checks.

The ultimate satisfaction of valued clients endorses the company's commitment for best techniques and designs backed by value based performance ethics.

The company out-sources the best materials and best quality 'Business, Quality Management' which has triggered to consolidate the effective costs. Today, it offers prime & reliable products at a very competitive market prices. The company remains ever alert to provide and execute the best 'After-Sales-Service'.



TECHNOLOGY



VISION



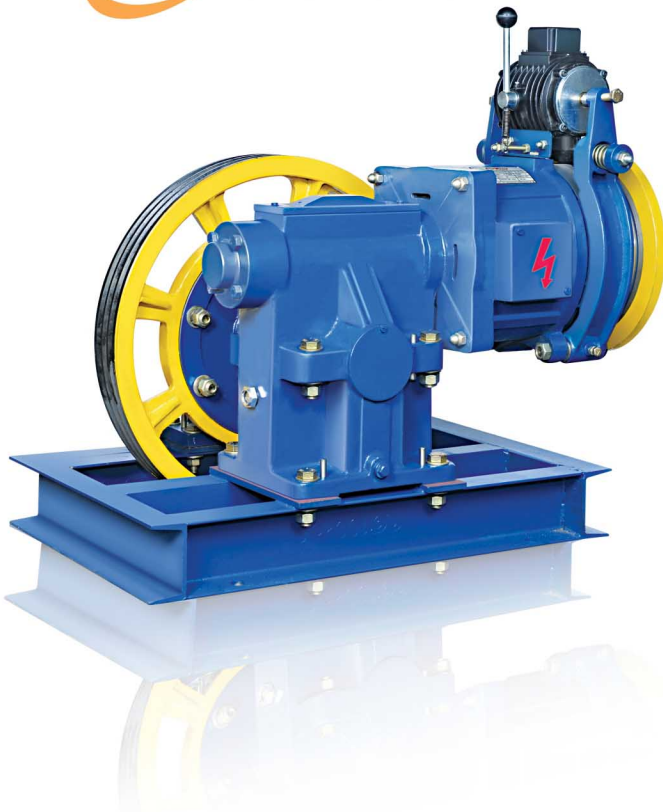
TIMING



LIFT-TEC
ENGINEERS

COMPACT | 127

Traction Machine



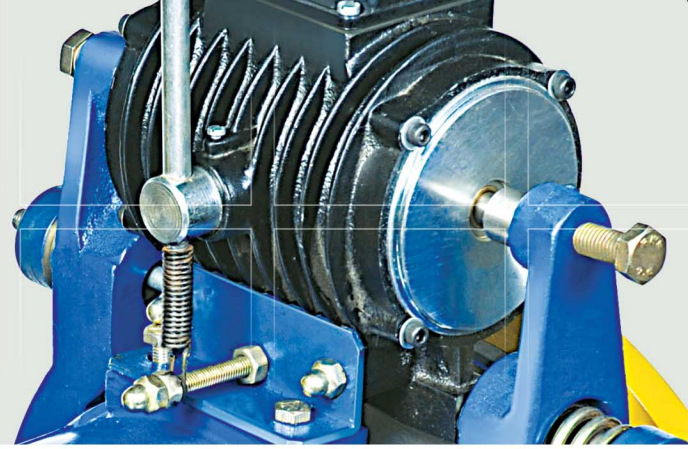
THE MACHINE

Keeping such a view, how to produce our same product qualifying higher quality in low cost for our customers.....

In lieu of this, we are proud to innovate and create the new designed elevator traction machines having LIFT - TEC branded which is attracting affordable cost with supreme quality maintaining....

FEATURES

- ▶ Worm wheel nickel base phosphorus bronze to achieve more life..
- ▶ Graded cast iron....
- ▶ Hardened alloy steel for shafts...
- ▶ Motor and Gear flexible for easy maintenance
- ▶ Low weight and easy installation...
- ▶ Traction Sheave 180 to 220 Brinell Hardness.



CONSTRUCTIVE CHARACTERISTICS

- ▶ Max. Load Capacity : 6 Passengers or 408 Kgs.
- ▶ Static Load Capacity : 3000 Kg
- ▶ Rated Speed Maximum : 0.63 m/s, Reduction Ratio 41:1
- ▶ Gear Box O/p Torque Capacity : 921 Nm @ Input Speed of 940 rpm.
- ▶ Motor Power and Speed : 3.7 kW / 940 rpm, S.S / VVVF, 350 - 410V, 3 PH, 50 Hz S4 duty, Insulation Class 'F'
- ▶ Brake operating Mechanism : Electro - Magnetic type with supply DC 110V. / 220V.
- ▶ Friction Sheave Size : Dia 530 x 3 Grooves x Rope Dia. 10 or 13mm.
- ▶ Oil capacity : 3 Lits.
- ▶ Weight of complete unit : 270 kg.

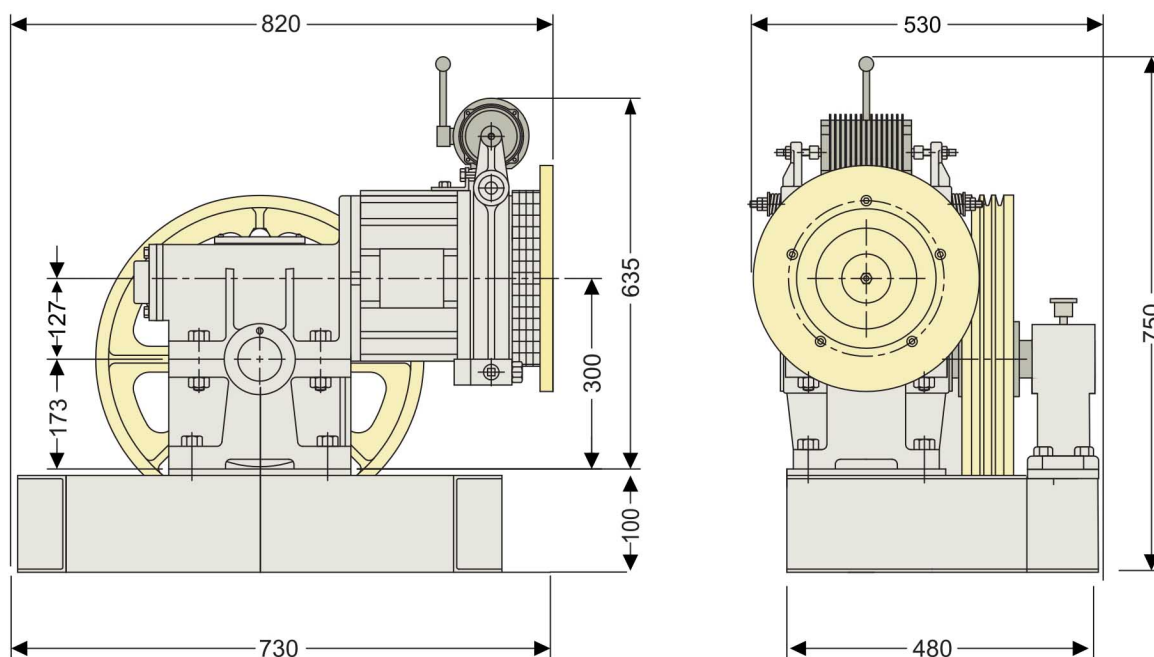


Superiority

No perfect thing is too small for eternal recollection



Technical Drawing



NOTE : All dimension are in mm, and for preliminary use only.
Unless otherwise Dimension change without any prior notice.

TECHNICAL SPECIFICATION

No.	MACHINE	GEAR				SHEAVE				MOTOR				
		LOAD In Kg.	TRAVELING IN METER	SPEED In. M/sec.	RATIO	SHEAVE DIA	NO. ROPE	ROPE DIA	ROPING	Kw.	Hp.	RPM	POLE	CONTROLLER
1	COMPACT - 127	272	24	0.65 m / sec.	40 : 1	510	3	10, 13,	1 : 1	3	4	920	6 POLE	VVVF DRIVE
2	"	272	24	1.00 m / sec.	40 : 1	510	3 & 4	10, 13,	1 : 1	3	4	1440	4 POLE	"
3	"	408	24	0.65 m / sec.	40 : 1	530	3 & 4	10, 13,	1 : 1	3.75	5	920	6 POLE	"
4	"	408	24	1.00 m / sec.	40 : 1	530	3 & 4	10, 13,	1 : 1	3.75	5	1440	4 POLE	"
5	"	680	24	0.33 m / sec.	40 : 1	530	3 & 4	10, 13,	2 : 1	3.75	5	920	6 POLE	"
6	"	680	24	0.50 m / sec.	40 : 1	530	3 & 4	10, 13,	2 : 1	3.75	5	1440	4 POLE	"
7	"	800	24	0.33 m / sec.	40 : 1	530	3 & 4	10, 13,	2 : 1	4.5	6	920	6 POLE	"
8	"	800	24	0.50 m / sec.	40 : 1	530	3 & 4	10, 13,	2 : 1	4.5	6	1440	4 POLE	"



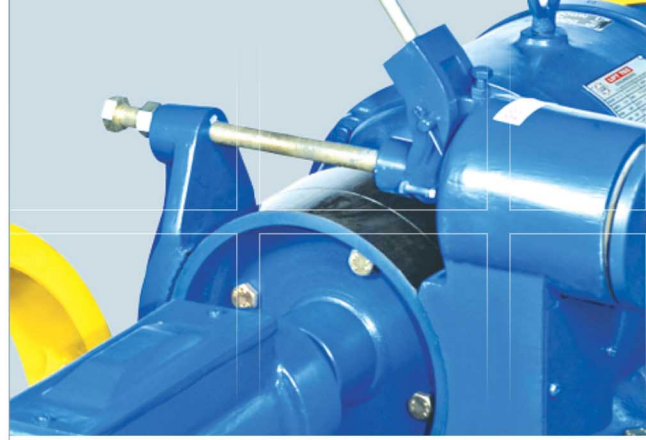
LIFT-TEC
ENGINEERS

Smooth Ride Different Experience



NOTE :

Before running the machine which has been out of action for a long time. It is important to make sure that the gearbox is filled with the correct amount of oil. More over one complete revolution of the sheave should be accomplished by hand after filling oil.



UPPER TRACTION ELEVATOR UNIT

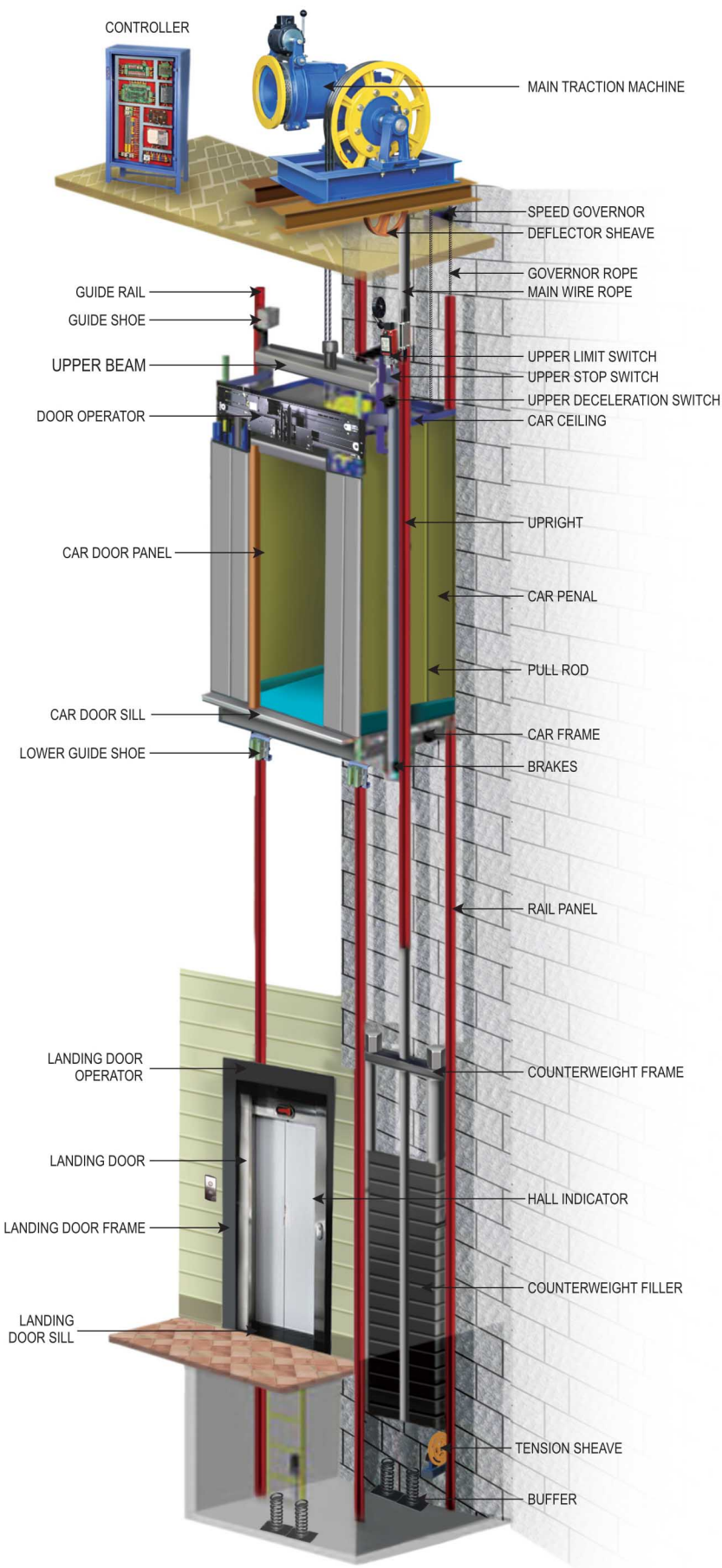
In Gear Use ISO - VG - 320 Grade of Oil

In Motor Use ISO - VG - 40 or 50 Grade of Oil

Center	Gear	Oil Capacity (Litr.)
4"	0	2.100
5"	1	3.100
6"	2	3.600
7"	3	7.000

- ▶ Change mineral oil Every 12 / 18 months .
- ▶ For synthetic oils every 24 / 36 months depending on the intensity of use.





OTHER PRODUCTS

DIVERTER SHEAVE



OVERSPEED GOVERNOR



RETIRING CAM



GUIDE RILL



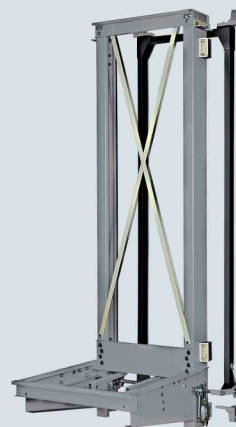
COP



LOP



CAR & CWT FRAME



AUTO DOORS



S.S. CABIN



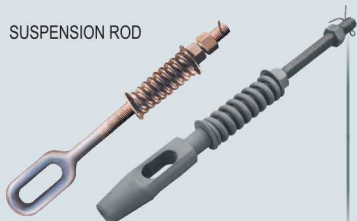
COLLAPSIBLE GATE



IMPROPORATED GATE



SUSPENSION ROD



G.P. BRACKET



SAFETY BLOC K



SPRING BUFFERS



GUIDE SHOE



DOOR LOCK



Mfg. of : Lift Duty Reduction Gear Box, Electric Motor & Other Lift Parts



LIFT-TEC
ENGINEERS

3, Prathna Estate, Jamfalwadi Road,
Opp. Sakariba Party Plot,
C.T.M. Amraiwadi, Ahmedabad - 380 026.
Mobile : 098797 30044
E-mail : sales@lifttecengineers.com
Website : www.lifttecengineers.com

www.lifttecengineers.com

